



NEWS ON THE WIND

Investing in Green Energy. Strengthening Local Communities.



LATEST NEWS

From the onset, we have committed to using as many local resources as possible on the project and are proud to announce that **Looke CanCut Limited** of Lunenburg County was awarded the land clearing contract for the project site and transmission line. Looke CanCut started clearing on January 20th and will finish work by the end of March. Following clearing, road construction will begin in the Spring.

Design work on the Foundations, Operations and Maintenance building, Substation and Collection system is ongoing.

South Canoe would also like to welcome Construction Manager Roger Myette (NSPI) to the project. He will oversee work on-site and will be a great resource to us and community.



IN THE COMMUNITY

Last Spring, we reached out to local businesses and individuals who were interested in providing services to the project with the goal of compiling a local business directory to be shared

with South Canoe's major contractors. In November, Rhea Hamlin, a recent University grad from New Ross, was tasked with finalizing the directory.



In addition to updating business information for South Canoe, Rhea secured permission from local businesses to share their information with the **"Why Here?"** project. "Why Here?" is an initiative developed by the six municipalities in Lunenburg and Queens counties to raise the profile of local businesses in the region. Visit www.whyhere.ca to view an interactive map showing business locations and descriptions.

Our local business meetings and Rhea's hard work have resulted in a local business database that will be shared with contractors as well as handouts on local accommodations, food, and leisure activities for all workers on the project site.

A big **Thank You** goes to Rhea and to everyone in the community who contributed to this project.



COMMUNITY LIAISON COMMITTEE

The Community Liaison Committee met on Monday January 20th in Vaughan. The group received a project update from Project Manager Sean Brennan, met new Construction Manager Roger Myette, and received an in-person update from George Robson about the wind turbine technician training he is completing in PEI. George spoke about the diverse backgrounds of his classmates and the excellent work he and his peers are doing on climbing and fixing towers in PEI.

The CLC also discussed the Sponsorship Fund and its plans to launch a first round of project funding in the coming months. The Sponsorship Sub-Committee is finalizing details on the application form and funding and will share more information in the following newsletter, New Ross Flyer and on the project website. Stay tuned for more details in February!

The next CLC meeting will be held on Monday March 10, 2014 from 6-8pm at the New Ross Family Resource Centre. All are welcome to attend.

CONTACT US - This newsletter, and others to follow, will keep you informed of project planning as well as what is happening on site. Please visit www.southcanoewind.com to view previous newsletters and feel free to contact Mary-Frances Lynch at (902) 684-1104 or info@southcanoewind.com to learn more about the project.



We will be mailing out a bundle of the monthly newsletters on a quarterly basis. Monthly digital copies are available electronically. Let us know if you'd like to be added to the electronic distribution list.



NEWS ON THE WIND

Investing in Green Energy. Strengthening Local Communities.



LATEST NEWS

Looke CanCut Limited of Lunenburg County is making progress on site preparation work and is nearly 50% complete clearing roads, turbine pads and the transmission line route. Site preparation will wrap up by March 31st and will be followed by road construction in the Spring.



IN THE COMMUNITY

Apply for First Round Applications – projects under \$1000

South Canoe has established a Sponsorship Fund providing grants for local non-profits. We invite **YOU** to submit an application for a project that enhances your community. The fund should assist in accessing funding otherwise not available.

The Community Liaison Committee's Sponsorship Sub-Committee will be reviewing submissions and is **currently accepting applications for grants up to \$1000 for this initial round**. A call for funding applications for projects and events over \$1000 will follow in summer.

Your project or event must support activities for residents of your community and the sustainability of community organizations and their facilities.

Eligible organizations must be located in the areas of New Ross, Leminster, Vaughan, and Sherwood (up to and including Canaan Rd). See map below.

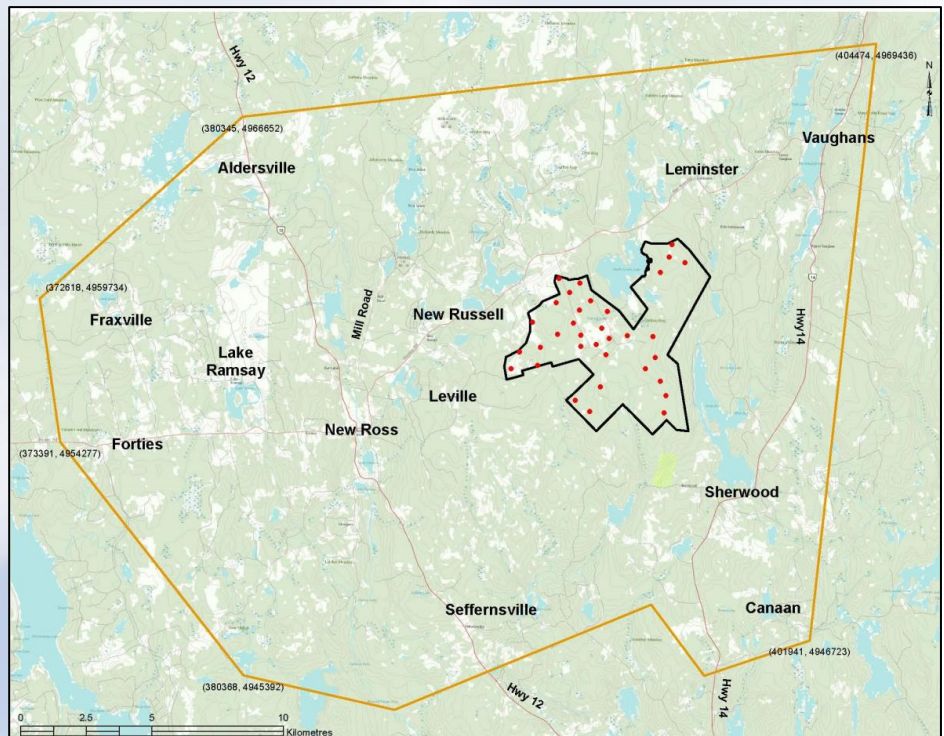
Applications delivered or mailed to:
South Canoe Wind Farm, 50 Forties Rd., PO Box 248, New Ross, NS, B0J 2M0 OR emailed to maryfrances.lynn@minasenergy.com by 5pm on March 31, 2014.

To download an application form, please visit www.southcanoewind.com/Community.aspx.



COMMUNITY LIAISON COMMITTEE

The next Community Liaison Committee meeting will be held on Monday March 10, 2014, 6-8pm at the New Ross Family Resource Centre. All are welcome to attend.



CONTACT US - This newsletter, and others to follow, will keep you informed of project planning as well as what is happening on site. Please visit www.southcanoewind.com to view previous newsletters and feel free to contact Mary-Frances Lynch at (902) 684-1104 or info@southcanoewind.com to learn more about the project.

We will be mailing out a bundle of the monthly newsletters on a quarterly basis. Monthly digital copies are available electronically. Let us know if you'd like to be added to the electronic distribution list.



NEWS ON THE WIND

Investing in Green Energy. Strengthening Local Communities.



LATEST NEWS

Looke CanCut Limited of Lunenburg County is nearly 95% complete the site preparation work and will wrap up by March 31.

The next phase of the construction process is to start building the site road network. We are planning to start this work in April.

OPEN HOUSE

We are hosting an **OPEN-HOUSE** on **Wednesday April 2, from 7-9pm, at the New Ross Legion (on Forties Rd, next to the Credit Union).**

That night, we'd like Acciona and the community to meet. Acciona will be supplying the wind turbines and managing the construction activities.



Please come and ask questions about work completed and construction next steps, the transportation route, Community Liaison Committee and Sponsorship Fund, local businesses, as well as meet Acciona team members.



IN THE COMMUNITY

Sponsorship Fund First Round – Applications Under \$1000

We invite YOU to submit an application for a project that enhances your community. Your project or event must support activities for residents of your community and the sustainability of community organizations and their facilities.

Eligible organizations must be located in the areas of New Ross, Leminster, Vaughan, and Sherwood (up to and including Canaan Rd).

Applications for projects under \$1000 are currently being accepted and can be delivered or mailed to:

South Canoe Wind Farm, 50 Forties Rd., PO Box 248, New Ross, NS, B0J 2M0 OR emailed to maryfrances.lynnch@minasenergy.com by 5pm on March 31, 2014.

Sponsorship Fund Second Round – Applications Over \$1000

A call for funding applications for projects and events over \$1000 will be open beginning in April. Please submit your application to the above address by 5pm on May 15, 2014.

To download an application form, please visit

www.southcanoewind.com/Community.aspx.



COMMUNITY LIAISON COMMITTEE

The Community Liaison Committee met on Monday March 10 in New Ross. The group celebrated TWO years as a CLC and reflected back on lessons learned. The committee also received construction and progress updates from site manager Roger Myette and project manager Sean Brennan. The group discussed the upcoming open-house and the sponsorship fund. An interested discussion was held on the Ivany Report and opportunities for South Canoe to become more involved with the New Ross Consolidated School's curriculum.

The next CLC meeting will be held on Monday May 26, from 6-8pm in Vaughan (location TBD).

A big **thank you** goes to the dedicated members of the CLC. We appreciate the great ideas that you continue to bring to the project and look forward to more great years to come.



CONTACT US - This newsletter, and others to follow, will keep you informed of project planning as well as what is happening on site. Please visit www.southcanoewind.com to view previous newsletters and feel free to contact Mary-Frances Lynch at (902) 684-1104 or info@southcanoewind.com to learn more about the project.

We will be mailing out a bundle of the monthly newsletters on a quarterly basis. Monthly digital copies are available electronically. Let us know if you'd like to be added to the electronic distribution list.



NEWS ON THE WIND

Investing in Green Energy. Strengthening Local Communities.



LATEST NEWS

Our civil contractor, Van Zutphen, has begun road constructing on-site. The road network is about 30km long, of which a third were existing roads. The majority of material required to build roads is located on-site which will reduce local traffic. We successfully completed our first blast at the main entrance to site on April 17 and will use this material in road-building.

This April, we welcomed George Robson of Leminster to our team to assist in construction before he begins work on wind farm operations.

A project lighting plan has been established in collaboration with Transport Canada and with feedback from a local resident. 10 of our 34 turbines will be equipped with a red flashing aviation light. Visit our website to view a map showing turbines equipped with lights. To reduce impacts on wildlife and minimize light pollution, motion-sensor lights will be used on the substation.

THANK YOU to everyone who attended the April 2nd open house in New Ross. It was a big success and we appreciated the great turnout, thoughtful questions, and warm welcome to Acciona.

As part of a program called **Techsploration**, NSPI Engineer Jennifer Gough brought six girls from New Germany Rural High School to the project site to show them firsthand what goes into constructing a wind farm. **Techsploration empowers young women to explore careers in science, trades and technology.** Thanks Jennifer for leading the group and to the girls for exploring our site!



March 2014 marks the **10 year anniversary** of Minas Basin Pulp and Power's installation of the meteorological tower on the South Canoe site. Below is a picture of George Bishop, Chairman of Scotia Investments Limited, standing alongside the met tower which is still on-site today gathering wind data.



IN THE COMMUNITY

Sponsorship Fund Second Round – Applications OVER \$1000

We invite YOU to submit an application for a project that enhances your community. Eligible organizations must be located in the areas of New Ross, Leminster, Vaughan, and Sherwood (up to and including Canaan Rd).

Applications to be delivered / mailed to:

South Canoe Wind Farm, 50 Forties Rd., PO Box 248, New Ross, NS, B0J 2M0 OR emailed to maryfrances.lynych@minasenergy.com by 5pm on May 15, 2014.

To download an application form, please visit www.southcanoewind.com/Community.aspx.



COMMUNITY LIAISON COMMITTEE

The next CLC meeting will be held on Monday May 26, from 6-8pm in Vaughan (location TBD).



CONTACT US - This newsletter, and others to follow, will keep you informed of project planning as well as what is happening on site. Please visit www.southcanoewind.com to view previous newsletters and feel free to contact Mary-Frances Lynch at (902) 684-1104 or info@southcanoewind.com to learn more about the project.

We will be mailing out a bundle of the monthly newsletters on a quarterly basis. Monthly digital copies are available electronically. Let us know if you'd like to be added to the electronic distribution list.



NEWS ON THE WIND

Investing in Green Energy. Strengthening Local Communities.



LATEST NEWS

Build local. Our priority is to use local resources on the project when possible. Our contractors are making their best efforts to hire local and are recording local content. **Looke CanCut** who conducted site clearing used **70% local** resources on their scope of work! "Local" is defined as within 40km of the project site. Currently, **Van Zutphen**, our civil contractor, is using **30% local** resources as part of their workforce. We will continue to use local resources and encourage you to contact us if you have skills or services to offer.

We have developed an infographic that will keep you up-to-date on construction progress. The infographic and photographs of project construction will be included in the New Ross Flyer and posted on our website's Construction Progress page. www.southcanoewind.com/ConstructionProgress.aspx

Van Zutphen is making good progress constructing roads on-site and is 10% complete this scope. The road network is about 30km long, of which 10km were existing roads. The majority of material required to build roads is located on-site which will reduce local traffic.



In appreciation of the local community, Van Zutphen will be **hosting a free Pig Roast on the project site (entrance at 2312 New Russell Rd) on Friday June 13th from noon to 4pm.** There will be free food, live music, and parking so please come and enjoy the site!



IN THE COMMUNITY

Looke CanCut has generously provided \$1000 each to the Ross Farm Museum and the New Ross Farmers Association from the sale of merchantable timber from the South Canoe site - a **BIG THANK YOU** to Looke for their generosity and support of the local community.

Congratulations to the organizations who received grants under \$1000 in the first round of Sponsorship Funding.

Recipients include:

- New Ross Community Market
- Forties Garden Club
- New Ross Golden Age Club
- New Ross Historical Society
- New Ross Pre-School
- Upper Vaughan Baptist Church

Stay tuned for information on over \$1000 grant recipients in an upcoming newsletter.



COMMUNITY LIAISON COMMITTEE

The last Community Liaison Committee meeting was held on Monday May 26th in Vaughan. Topics discussed included a project update, the sponsorship fund, as well as South Canoe's involvement with the New Ross Consolidated School. Please read an upcoming newsletter for information on CLC meetings over the summer months.



CONTACT US - This newsletter, and others to follow, will keep you informed of project planning as well as what is happening on site. Please visit www.southcanoewind.com to view previous newsletters and feel free to contact Mary-Frances Lynch at (902) 684-1104 or info@southcanoewind.com to learn more about the project.

We will be mailing out a bundle of the monthly newsletters on a quarterly basis. Monthly digital copies are available electronically. Let us know if you'd like to be added to the electronic distribution list.



NEWS ON THE WIND

Investing in Green Energy. Strengthening Local Communities.



LATEST NEWS

Van Zutphen is making good progress constructing roads on-site and is 30% complete this scope. The road network is about 30km long, of which 10km were existing roads. The majority of material required to build roads is located on-site which is reducing traffic on local roads. Turbine foundations will be poured in early July!

We have developed an infographic that will keep you up-to-date on construction progress. The infographic and photographs of project construction will be included in the New Ross Flyer and posted on our website's Construction Progress page. www.southcanoewind.com/ConstructionProgress.aspx



COMMUNITY LIAISON COMMITTEE

Our next CLC meeting will be held on Monday July 28th, from 6-8pm in New Ross (location TBD). All are welcome. Please contact Mary-Frances for information on the meeting location.



IN THE COMMUNITY

Thank you to everyone who attended the Zutphen Pig Roast! It was great to see so many community members on the site. Thanks to local musicians Ricki Naugler, Kirkland Naugler, Lucas Reeves and Jamie Junger for providing great entertainment as well as Vittles and Num Num's Bakery for the delicious food. **A BIG THANK YOU** to the Van Zutphen's for sponsoring such a successful event.



Congratulations to the organizations who received grants over \$1000 in the second round of Sponsorship Funding.

- Charing Cross Garden Club
- Forties Community Centre
- New Ross Legion
- Vaughan United Church
- Southwest Hants Fire Society
- Kings-West Hants CAP Association
- New Ross Family Resource Centre
- New Ross Farmers Association
- New Ross District Museum Society
- Diamond Devils Motorcycle Sisterhood
- New Ross Regional Development Society

Below, South Canoe's Mary-Frances Lynch and Sean Brennan present funding to recipients.



CONTACT US - This newsletter, and others to follow, will keep you informed of project planning as well as what is happening on site. Please visit www.southcanoewind.com to view previous newsletters and feel free to contact Mary-Frances Lynch at (902) 684-1104 or info@southcanoewind.com to learn more about the project.

We will be mailing out a bundle of the monthly newsletters on a quarterly basis. Monthly digital copies are available electronically. Let us know if you'd like to be added to the electronic distribution list.



NEWS ON THE WIND

Investing in Green Energy. Strengthening Local Communities.



LATEST NEWS

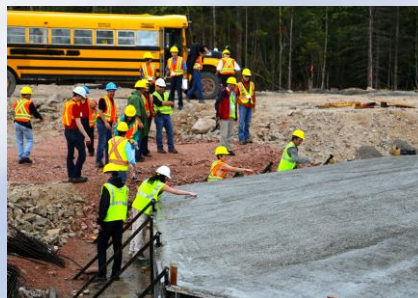
Van Zutphen is making great progress constructing roads on-site and is 55% complete this scope. Powertel is 10% complete work on the collector system and Emera Utility Services is halfway done work on the transmission line, installing poles and wires. Substation construction is also underway and is 30% complete. Significant progress is being made this summer with over 150 workers currently on-site.

Our priority has always been to use local contractors and resources where possible. A prime example is the manufacturing of Acciona's turbine towers at DSTN in Trenton, NS. Currently, the turbine towers are being made at the DSTN facility!

A transportation study has been completed assessing the route for delivering turbine components to site. Large components such as turbine blades and nacelles will be delivered from the port of Liverpool while turbine towers will be transported from Trenton. All components will travel via highway 103 and route 12, onto Lake Lawson Road and the New Russell road to get to site. We expect deliveries of equipment to begin in early October and are currently working on a communications plan

that will notify local residents of deliveries and increased traffic. If you have any suggestions on preferred communications, please contact Mary-Frances. Stay tuned to upcoming newsletters for more details.

Our Community Liaison Committee, Municipal Council and Staff, as well as members of the South Canoe project executive team received a first-hand view of the construction progress on July 24th. The group visited the on-site concrete batch-plant, rock quarry, and three turbine foundation sites. It was a great opportunity to share our construction progress with the group. Thanks to all who attended!



COMMUNITY LIAISON COMMITTEE

Our CLC met on Monday July 28th, from 6-8pm in the Forties. The Committee received a project update from Construction Manager Roger Myette, Environmental Lead Jenny Pratt and Project Manager Sean Brennan. The committee also discussed the recent site fieldtrip, project timeline, and sponsorship fund activities related to the New Ross school. The CLC has been working in partnership with the New Ross Credit Union to develop a micro loan program, with plans to launch in the fall. More information on this program will be shared on our project website this fall and in an upcoming newsletter. Stay tuned...



IN THE COMMUNITY

Our South Canoe Team is looking forward to volunteering again this year at the New Ross Fair on August 16th. See you at the fairgrounds.

Have a great rest of summer!



CONTACT US - This newsletter, and others to follow, will keep you informed of project planning as well as what is happening on site. Please visit www.southcanoewind.com to view previous newsletters and feel free to contact Mary-Frances Lynch at (902) 684-1104 or info@southcanoewind.com to learn more about the project.

We will be mailing out a bundle of the monthly newsletters on a quarterly basis. Monthly digital copies are available electronically. Let us know if you'd like to be added to the electronic distribution list.



NEWS ON THE WIND

Investing in Green Energy. Strengthening Local Communities.



LATEST NEWS

At our CLC meeting in July, the group discussed the importance of effectively sharing information on our plan for transporting wind turbine components to site. This newsletter is a first step in informing you of our transportation plan and so we welcome your feedback.

Transportation of the main turbine components will **begin the week of October 6, 2014.**

There are 10 trucks per turbine:

- 5 tower sections
- 3 blades
- 1 nacelle (generator)
- 1 hub (connects blades)

We plan to deliver 2-3 complete turbines to site per week. This would mean 20-30 truckloads per week.

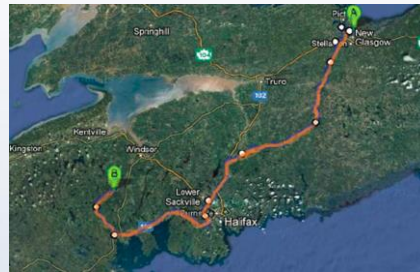
TOWERS

The transportation route is different for the tower sections than for the blades, nacelles, and hubs. The tower sections are being manufactured right here in Nova Scotia in Trenton.

From Trenton the towers will travel along HWY 104 to HWY 289 to HWY 336 to HWY 224 to HWY 227 to HWY 2 to HWY 102 to Cobequid Rd to HWY 102 to HWY 103 to HWY 12 to Lake Lawson Rd and finally to New Russell Rd to site.

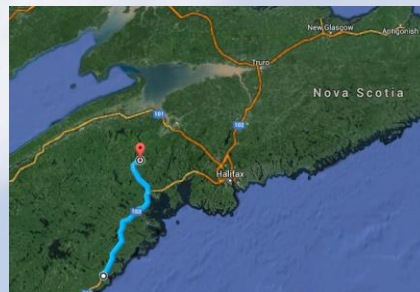
The route is selected based on the overpass structures and strength of bridges and culverts on the route. A permanent upgrade is underway on the Morley Bridge on New Russell Rd.

The widest tower section is the base (bottom) section at 15'10" while the longest tower section is the top at 89'.



NACELLES BLADES and HUBS

The nacelles, blades, and hubs will arrive in NS from Spain, with the exception of 8 blade sets (3 blades per set) that will arrive from China. All will enter via the Port of Liverpool, the site of the former Abitibi Bowater Mill. From there, the components will travel to HWY 103 to HWY 12 to Lake Lawson Rd and finally to New Russell Rd to site.



The nacelle is 17'2" tall and the blades are 187 feet long.

SAFETY

Community safety is our top priority. When the trucks pass on Lake Lawson Rd and New Russell Rd, short traffic stops could be required for vehicles travelling in the opposite direction. There will be traffic control in place for these deliveries. Having been in the community for the past two years, we know that there are industry and community needs that rely on passage on these roads. We are conscious of this and doing our best to minimize the impact. More information on the delivery times and plan will be shared in the September newsletter.

On-site road construction is 75% complete. Powertel is 25% complete work on the collector system and Emera Utility Services is 75% done work on the transmission line. Substation construction is also underway and is halfway complete, while 8 turbine foundations have been fully installed. Significant progress is being made this summer with over 150 workers currently on-site.



COMMUNITY LIAISON COMMITTEE

Our next CLC meeting will be held at the Vaughan Fire Hall on Monday September 29th from 6-8pm.



CONTACT US - This newsletter, and others to follow, will keep you informed of project planning as well as what is happening on site. Please visit www.southcanoewind.com to view previous newsletters and feel free to contact Mary-Frances Lynch at (902) 684-1104 or info@southcanoewind.com to learn more about the project.

We will be mailing out a bundle of the monthly newsletters on a quarterly basis. Monthly digital copies are available electronically. Let us know if you'd like to be added to the electronic distribution list.



NEWS ON THE WIND

Investing in Green Energy. Strengthening Local Communities.



LATEST NEWS

Our turbine blades, hubs and nacelles have arrived in the Port of Liverpool and are ready to bring to site. Have a look!



Thank you to everyone who came out to the public meeting on Tuesday September 30. We shared details on the turbine deliveries and heard your feedback.

DELIVERIES

As discussed, the transportation of the main turbine components will **begin the week of October 6, 2014.**

The current plan is for deliveries to occur on Mondays, Tuesdays, Wednesdays, and Thursdays with Fridays optional. Blades, nacelle and hub will be delivered on Mondays and Wednesdays while tower sections will be delivered on Tuesdays and Thursdays, with each day seeing 5 delivery trucks come to site. The equipment will travel during daylight hours and deliveries will be spaced out

by at least a half hour.

We plan to deliver 2-3 complete turbines to site per week. This would mean 20-30 truckloads per week.

The local route of travel for the components will be via HWY 103 to HWY 12 to Lake Lawson Rd and finally to New Russell Rd to site.

SAFETY

Community safety is our top priority. When the trucks travel on local roads, we ask that you follow behind and do not pass. Most trucks will be following the speed limit while larger components will travel 35-50km/h. There will be flagging trucks in front and behind each delivery truck to ensure traffic control and safety. Oncoming traffic will flow normally unless stopped while trucks make a turn (3-4 minute stop).

We ask that community members keep a safe distance when viewing the deliveries and not stand on the road shoulder. Mike Keddy and Collin Hughes have generously offered their lots on Hwy 12 and New Russell Rd respectively as safe viewing locations for the deliveries.

GPS TRUCK TRACKING

To keep residents informed of exactly where the turbine delivery trucks are located and to help plan your daily travel, we have created a GPS truck tracking tool. Each delivery truck will be equipped with a GPS device and residents can access this information on a website showing truck location at

any given time. Visit the main page of our website at southcanoewind.com to access the GPS truck tracker. Thanks to our CLC for bringing this idea forward.



On-site road construction is 90% complete. Powertel is 40% complete work on the collector system and Emera Utility Services is nearly done work on the transmission line. Substation construction is also underway and is 75% complete, while 21 turbine foundations have been fully installed.



COMMUNITY LIAISON COMMITTEE

Our CLC met on September 29th and reviewed information on the transportation route and the Sponsorship Fund.

Our next meeting will be held in New Ross on Monday November 24th from 6-8pm.



CONTACT US - This newsletter, and others to follow, will keep you informed of project planning as well as what is happening on site. Please visit www.southcanoewind.com to view previous newsletters and feel free to contact Mary-Frances Lynch at (902) 684-1104 or info@southcanoewind.com to learn more about the project.

We will be mailing out a bundle of the monthly newsletters on a quarterly basis. Monthly digital copies are available electronically. Let us know if you'd like to be added to the electronic distribution list.



NEWS ON THE WIND

Investing in Green Energy. Strengthening Local Communities.



LATEST NEWS

WIND FARM SITE TOUR – All Are Welcome!

We've heard from many of you that you'd like to get an up-close look at site construction. With components on-site and turbine installation underway, we'd like to share with you the progress that we've made thus far.

With this in mind, you are invited to join us for a tour of the site on Saturday November 22. We will all leave in buses from the New Ross Consolidated School parking lot at 1:00pm and we estimate that the tour will last 3 hours. We will bus you to and from the site where you will view constructed roads, substation, collection system, turbine foundations, and assembled turbines. Refreshments will be provided as will handout information on the project. Please dress warmly. **For planning purposes, RSVP to rsvp@southcanoewind.com or (902) 684-1104 by November 14.**



DELIVERIES

To date, we have delivered six turbines to site and will continue deliveries into early 2015.

We appreciate your understanding and feedback as we have worked through the first few weeks of turbine deliveries. **Recent changes to our delivery schedule include a permit that allows us to deliver tower sections overnight.** This will limit traffic congestion during peak day times. We plan to continue delivering tower sections overnight over the coming weeks.

Deliveries of blades, nacelles and hubs will continue during the daytime on Mondays and Wednesdays.

We have also received a permit to deliver turbines on Saturdays if circumstances arise where this option is needed.

As it stands, we will continue to deliver turbines during the week, ideally from Monday to Thursday.

As daily plans change, we will continue to update our website daily to share info on the day's deliveries. Please visit our home page at www.southcanoewind.com for this information.

GPS TRUCK TRACKING

To keep residents informed of exactly where the turbine delivery trucks are located and to help plan your daily

travel, we have created a GPS truck tracking tool. Each delivery truck will be equipped with a GPS device and residents can access this information on a website showing truck location at any given time. The GPS tracker will be available every day between about 5am until the last load is delivered and will only display trucks that are loaded with components. Also, the tracker site will be disabled when no deliveries are being made (ie. on weekends). Visit www.southcanoewind.com to access the tool.



NO HUNTING ON-SITE

A reminder to hunters in the area that, for safety reasons, **hunting is not permitted** on the South Canoe project site during construction.



COMMUNITY LIAISON COMMITTEE

Our next meeting will be held in New Ross on Monday November 24th from 6-8pm at the New Ross Family Resource Centre.



CONTACT US - This newsletter, and others to follow, will keep you informed of project planning as well as what is happening on site. Please visit www.southcanoewind.com to view previous newsletters and feel free to contact Mary-Frances Lynch at (902) 684-1104 or info@southcanoewind.com to learn more about the project.

We will be mailing out a bundle of the monthly newsletters on a quarterly basis. Monthly digital copies are available electronically. Let us know if you'd like to be added to the electronic distribution list.



NEWS ON THE WIND

Investing in Green Energy. Strengthening Local Communities.



LATEST NEWS

A huge thank you to everyone who attended our site tour on Saturday November 22. We were happy to welcome over 400 people to the site to show you our construction progress.



As shown on the tour, we have completed all 34 wind turbine foundations, energized our substation and transmission line, are constructing our Operations & Maintenance building, and erecting turbine components. You can follow our progress through our construction infographic at: www.southcanoewind.com/ConstructionProgress.aspx.

TURBINE DELIVERIES

To date, we have delivered 16 turbines to site and will continue deliveries into early 2015.

Our latest shipment of blades, hubs and nacelles arrived this week from Spain to the Port of Liverpool, NS and our final shipment will arrive from China in January. Towers continue to be made in Trenton and trucked from the DSTN facility.

Typically, we have been delivering components Monday - Thursday; however, as winter weather sets in, we may need to deliver components on Fridays, weekends and overnight.

As plans change, we will continue to update our website daily to share info on the day's deliveries. Please visit our home page at www.southcanoewind.com for info.

We appreciate your understanding and feedback on the turbine deliveries.

GPS TRUCK TRACKING

To keep residents informed of exactly where the turbine delivery trucks are located, we have created a GPS truck tracking tool. Each delivery truck is equipped with a GPS device and residents can access this info on our website. The GPS tracker will only display trucks that are loaded with components. Also, the tracker site will be disabled when no deliveries are being made. To access the tool, visit www.southcanoewind.com.



COMMUNITY LIAISON COMMITTEE

We were all greatly saddened to hear of the passing of CLC member and New Russell resident Bob Hutt this month. He played an integral role with us as the Chair of our Sponsorship Committee and as our site photographer. He will be greatly missed.

Here is one of the countless beautiful images that Bob captured of our site.



Our next CLC meeting will be held on Monday January 26 from 6:30-8:30pm at the New Ross Family Resource Centre. All are welcome to attend.

We wish everyone a very happy and safe holiday season!

We will be mailing out a bundle of the monthly newsletters on a quarterly basis. Monthly digital copies are available electronically. Let us know if you'd like to be added to the electronic distribution list.



CONTACT US - This newsletter, and others to follow, will keep you informed of project planning as well as what is happening on site. Please visit www.southcanoewind.com to view previous newsletters and feel free to contact Mary-Frances Lynch at (902) 684-1104 or info@southcanoewind.com to learn more about the project.



NEWS ON THE WIND

Investing in Green Energy. Strengthening Local Communities.



LATEST NEWS

Happy New Year! We are looking forward to this year and the last big construction push on the South Canoe Wind Farm. Site crews were hard at work over the holidays, making construction progress.

Currently, we have 4 cranes on-site assembling turbines. Five turbines have been fully erected and 20 turbines are in various stages of assembly.



We have also energized our substation and transmission line and are constructing our Operations & Maintenance building.



We plan to complete the project this Spring. You can follow our progress through our construction infographic at: www.southcanoewind.com/ConstructionProgress.aspx.

TURBINE DELIVERIES

To date, we have delivered 20 turbines to site and plan to wrap up deliveries mid-February.

Our LAST shipment of blades, hubs and nacelles will arrive from China the week of January 12. Towers continue to be made in Trenton and trucked from the DSTN facility.

Typically, we have been delivering components Monday - Thursday; however, to make sure we complete the project as quickly as possible, we will be attempting to deliver 3 turbines per week every second week. This may include delivering components on Fridays, weekends and overnight.

As plans change, we will continue to update our website daily to share info on the day's deliveries. Also, view the location of the trucks with our GPS truck tracker located on our home page at www.southcanoewind.com.

SUPPORT FOR GAVIN ROLFE

Mid-December, one of our site workers from Surespan (turbine erection contractor) learned of a local fundraising campaign for Gavin Rolfe, a 2-year old Martock resident who is

battling cancer and seeking treatment in Halifax and Toronto. Our site workers held a fundraiser and encouraged all contractors to contribute. We are pleased to say that our construction workers raised the first \$1,500 and that our contractors Surespan, Acciona Energy, Acciona Wind Power, and the South Canoe partners followed suit. Together, the team raised \$9,000 for the Rolfe's.

To learn how to support, contact Sara Downing (902-253-2129), Amanda Leary (902-790-2403). An online bank account has been set up for Gavin. Money transfers can be sent to donationsforgavin2014@gmail.com. Use the password "Gavin".

To find out about Gavin's progress and fundraisers, visit "Gavin's Gladiators" page on Facebook

The next fundraiser is Jan. 24 at 9:30 p.m. at Tommy Gun's Speakeasy in Windsor. They will be hosting "Rockin' for the Rolfes", a concert featuring Kevin Davison. \$10 per person.



COMMUNITY LIAISON COMMITTEE

Our next CLC meeting will be held on Monday January 26 from 6:30-8:30pm at the New Ross Family Resource Centre. All are welcome.



CONTACT US - This newsletter, and others to follow, will keep you informed of project planning as well as what is happening on site. Please visit www.southcanoewind.com to view previous newsletters and feel free to contact Mary-Frances Lynch at (902) 684-1104 or info@southcanoewind.com to learn more about the project.

We will be mailing out a bundle of the monthly newsletters on a quarterly basis. Monthly digital copies are available electronically. Let us know if you'd like to be added to the electronic distribution list.