



SITE PROGRESS

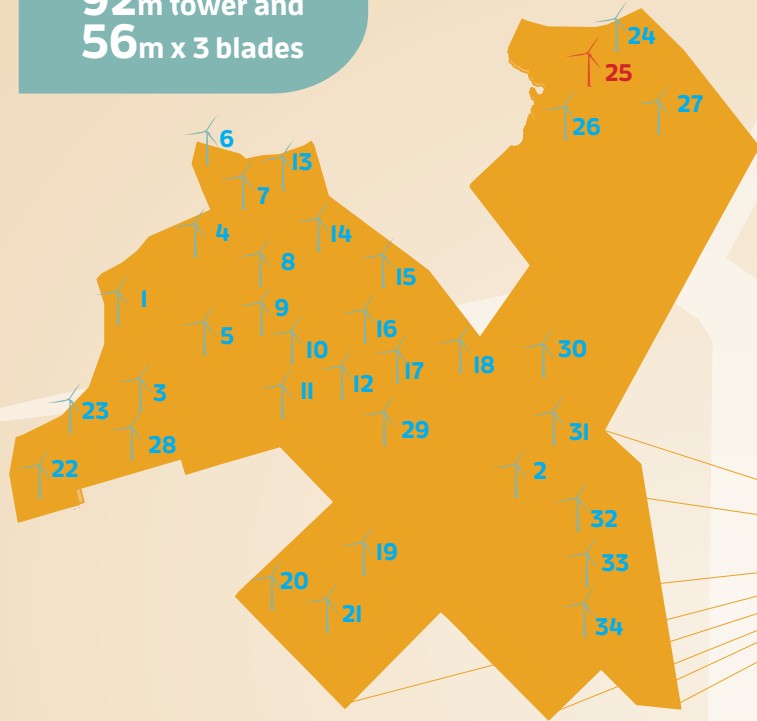
NOVEMBER 2014

34 Acciona AW-3000/116 turbines

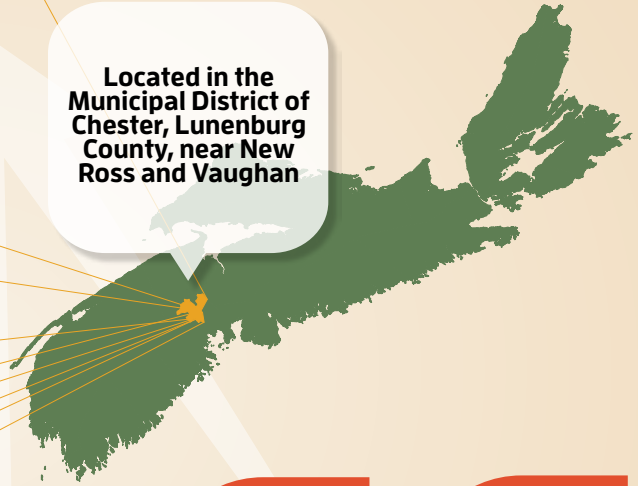
92m tower and **56m** x 3 blades

102 MW wind farm, enough power to supply **32,000** homes

A total of **15 km** of rebar is required for each turbine foundation



Located in the Municipal District of Chester, Lunenburg County, near New Ross and Vaughan



All material used to build project roads has been sourced from onsite

165 workers currently on-site and over **245,000** person-hours on the project to date



Turbine Foundation Installed
34 of 34



Turbine Erected
1 of 34



Turbine Mechanically Complete
0 of 34



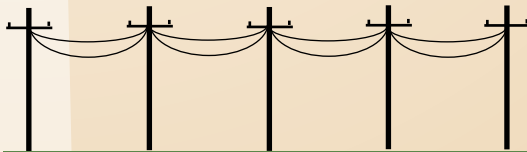
Turbine Commissioned
0 of 34

PROJECT MILESTONES



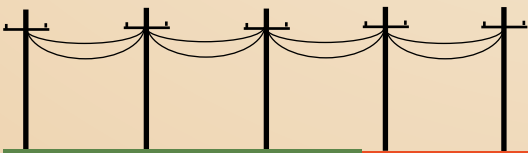
100% complete

Total 30km of roads



100% complete

Total 17km of transmission line



65% complete

Total 26km of collector system

100% complete



Substation Construction