



SITE PROGRESS

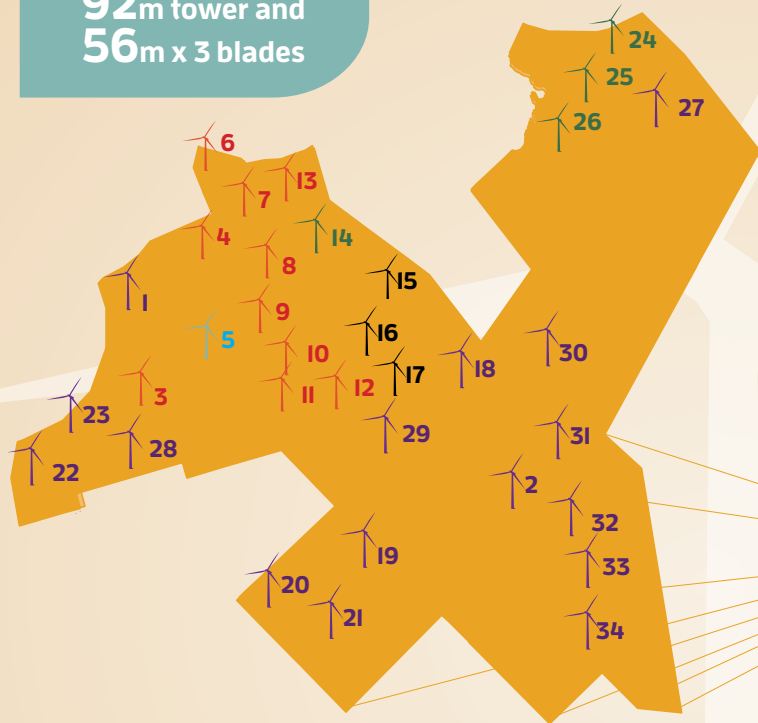
APRIL 2015

34 Acciona AW-3000/116 turbines

92m tower and **56m** x 3 blades

102 MW wind farm, enough power to supply **32,000** homes

A total of **15 km** of rebar is required for each turbine foundation



Located in the Municipal District of Chester, Lunenburg County, near New Ross and Vaughan



Turbine Partially Erected 1 of 34	Turbine Fully Erected 33 of 34	Turbine Mechanically Complete 23 of 34	Turbine Pre-Commissioned 4 of 34	Turbine Operating 3 of 34
---	--	--	--	-------------------------------------

All material used to build project roads has been sourced from onsite

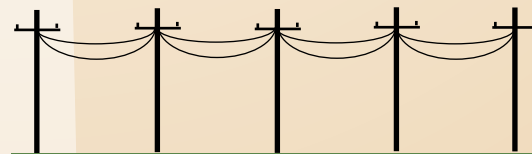
140 workers currently on-site and over **400,000** person-hours on the project to date

PROJECT MILESTONES



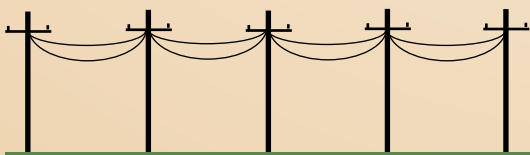
100% complete

Total **30km** of roads



100% complete

Total **17km** of transmission line



95% complete

Total **26km** of collector system

100% complete



Substation Construction