



SITE PROGRESS

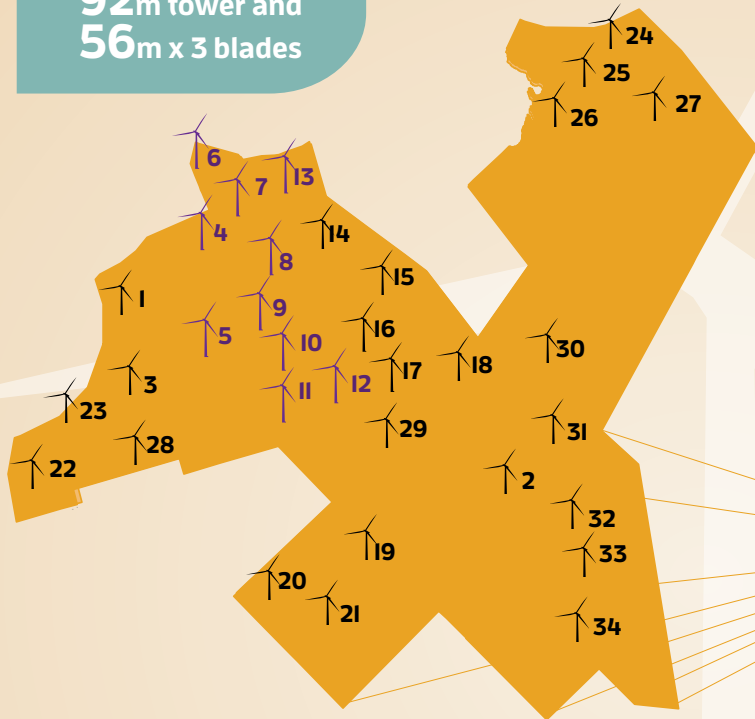
MAY 2015

34 Acciona AW-3000/116 turbines

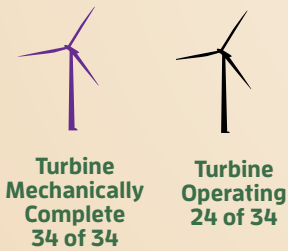
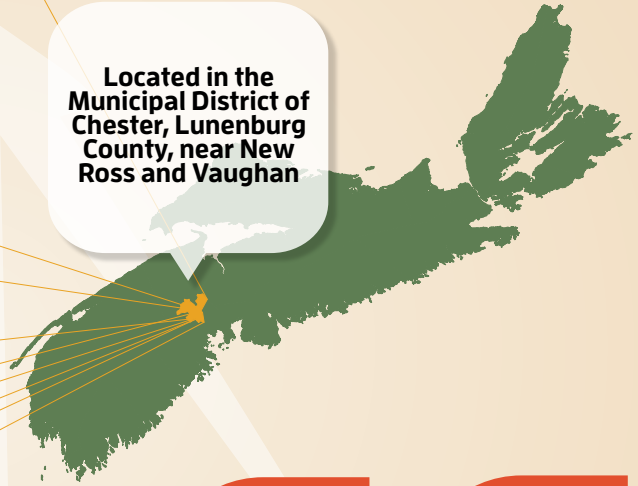
92m tower and
56m x 3 blades

102 MW
wind farm,
enough power
to supply
32,000
homes

A total of 15
km of rebar is
required for
each turbine
foundation



Located in the
Municipal District of
Chester, Lunenburg
County, near New
Ross and Vaughan



All material
used to build
project roads
has been
sourced from
onsite

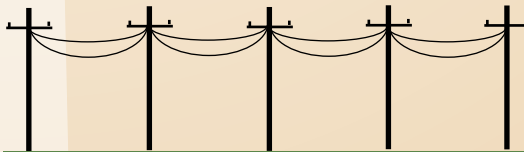
60 workers
currently on-site
and over 419,000
person-hours
on the project to
date

PROJECT MILESTONES



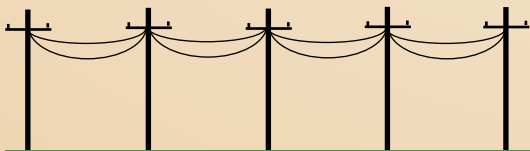
100% complete

Total
30km of
roads



100% complete

Total 17km of
transmission
line



98% complete

Total 26km
of collector
system

100%
complete



Substation
Construction