



SITE PROGRESS

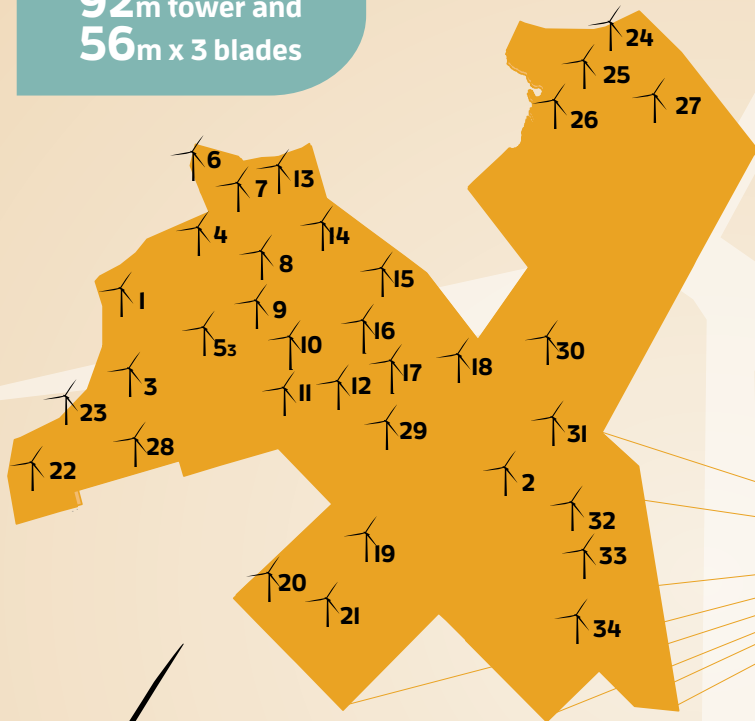
JUNE 2015

34 Acciona AW-3000/116 turbines

92m tower and **56m** x 3 blades

102 MW wind farm, enough power to supply **32,000** homes

A total of **15 km** of rebar is required for each turbine foundation



Located in the Municipal District of Chester, Lunenburg County, near New Ross and Vaughan

Turbines Operating 34 of 34

All material used to build project roads has been sourced from onsite

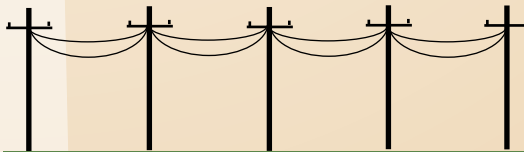
750 people worked on the South Canoe site over the construction phase

PROJECT MILESTONES



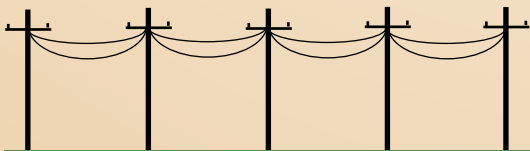
100% complete

Total **30km** of roads



100% complete

Total **17km** of transmission line



100% complete

Total **26km** of collector system

100% complete



Substation Construction